

PHASE 1: INTERMEDIATE SUBMISSION CHECKLIST/SIGNOFF SHEET

GROUP #: 1

GROUP NAME: Sun Devil

Intermediate Deliverables:

- ✓ Requirements description
- ✓ ER diagram with min/max specifications

Intermediate Assessment:

- ✓ Group Status Report

We have each reviewed the contents of this deliverable.

	<i>Printed Name</i>	<i>Signature</i>
Phase Leader	John Smith	_____
Phase Recorder	Samuel White	_____
Phase Checker	Tammy Brooks	_____
Technical Advisor 1	Tom Douglas	_____
Technical Advisor 2	Ann Music	_____

Company Employee Administrative Database (COMPANY)

Table of Contents

1. Introduction _____	3
2. Requirements and Description of the Enterprise _____	3
3. Conceptual Design ER Diagram [Elmasri / Navathe, 1994, Figure 3.2] _____	4
GROUP STATUS REPORT _____	5

1. Introduction

The database enterprise used in the sample deliverables and implementation is the COMPANY example database from :

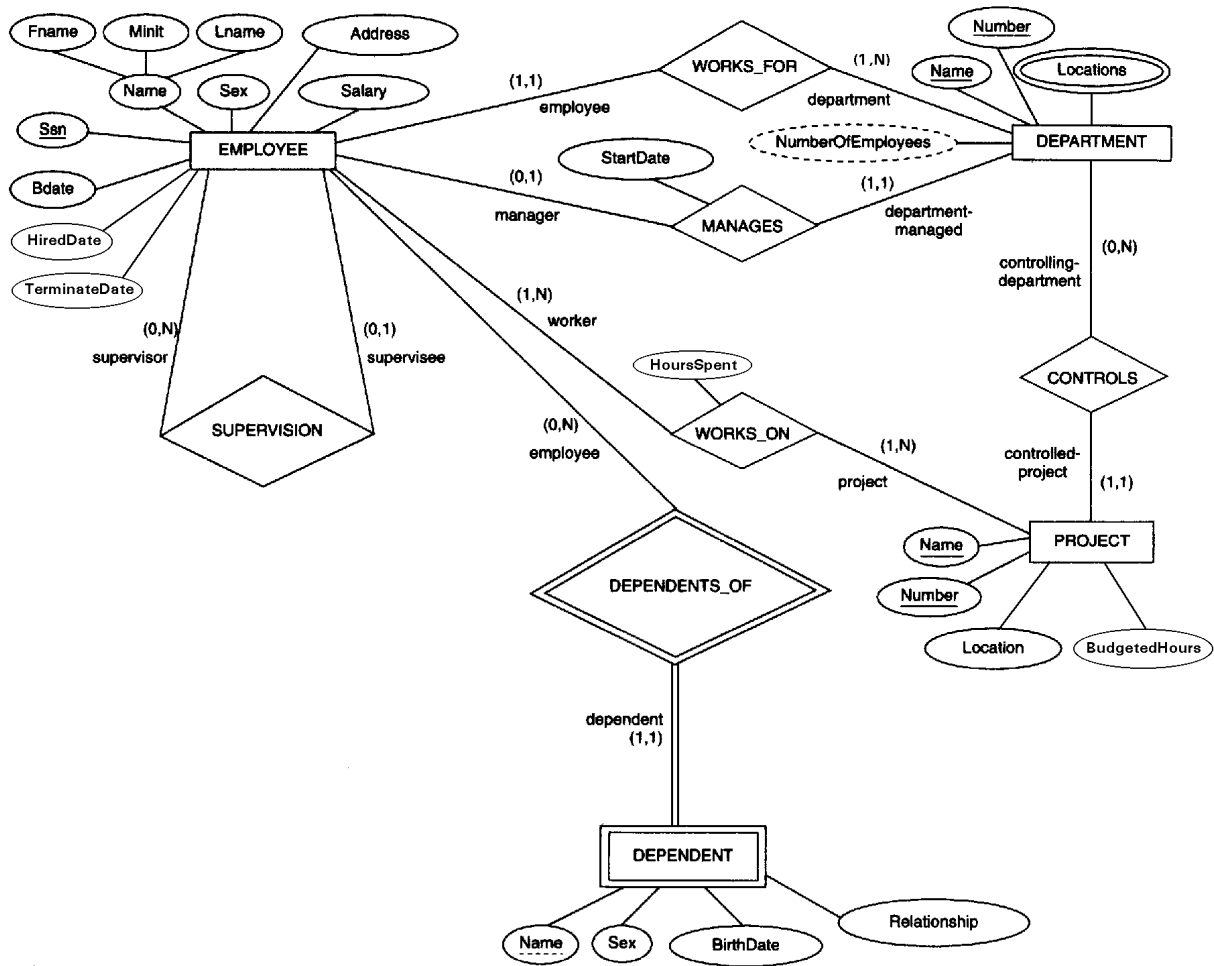
Fundamentals of Database Systems, 2nd edition
R. Elmasri and S. Navathe
Benjamin/Cummings Publishing, 1994

2. Requirements and Description of the Enterprise

The Company Employee Administrative Database (COMPANY) stores information about the employees, the departments and the projects of a company. The following data have been identified in the requirements collection and analysis phase and they are to be represented in the enterprise:

- The company is organized into departments. Each department has a unique name, a unique number, and a particular employee who manages the department. The database keeps track of the start date when an employee began managing the department. A department may have several locations.
- A department controls a number of projects, each project has a unique name, a unique number, and a single location. The database also stores the number of work-hours budgeted for each project.
- The database stores each employee's name, social security number, address, salary, sex, birthdate, date hired and date he/she terminates employment. An employee is assigned to one department but he/she may work on several projects, which are not necessarily controlled by the same department. The database also keeps track of the number of hours an employee already worked on each project, and the direct supervisor of each employee if he/she has one. (Note that an employee need not have an assigned supervisor.)
- For insurance purposes, the database keeps track of the dependents of each employee. Each dependent's name, sex, birthdate, and relationship to the employee is recorded in the database.

3. Conceptual Design ER Diagram [Elmasri / Navathe, 1994, Figure 3.2]



- o Team Assessment
- o Enumerate the Processing Needs for Projects including documentation
- o Assessment Question: Group Enterprise 2
- o Sponsor Extension

Technical Advisor 1:

- Tutorial
- Prepared Introduction for deliverable
- o Enumerate the Processing Needs for Departments including documentation
- o Assessment Question: Group Enterprise 3
- o Sponsor Extension

Technical Advisor 2:

- Tutorial
- Prepared Requirements Description of the Enterprise for deliverable
- o Enumerate the Processing Needs for Employees including documentation
- o Assessment Question: Company Enterprise 1
- o Sponsor Extension